

1. Lisa has 15 buttons. She makes puppets that use 5 buttons each. Which equation shows how many puppets Lisa can make? (7-4)



- (A) $15 + 5 = n$
- (B) $15 \div 5 = n$
- (C) $15 - 5 = n$
- (D) $15 \times 5 = n$
2. Which story could be solved with $18 \div 3$? (7-5)
- (A) Carmen has 18 flowers. He puts 3 flowers in a vase. How many flowers are not in the vase?
- (B) Sandra buys 18 packs of baseball cards. Each pack has 3 cards. How many baseball cards does Sandra have?
- (C) Miss Reynolds has 18 crayons. She gives each student 3 crayons. How many students get crayons?
- (D) Mr. Lee makes 18 birdhouses for a craft show. He sells all but 3 birdhouses. How many birdhouses did Mr. Lee sell?

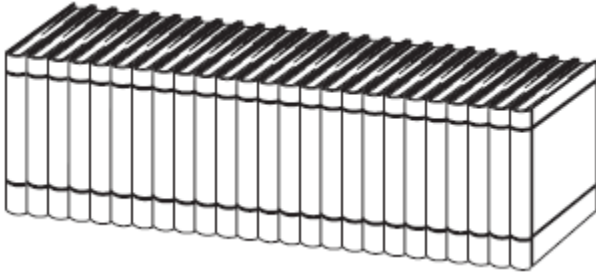


3. Four students have 20 crayons to share. Which number sentence shows how many crayons each student will get? (7-1)



- (A) $20 - 4 = 16$
(B) $20 \times 4 = 80$
(C) $20 \div 4 = 5$
(D) $20 + 4 = 24$

4. A librarian has 25 books. She puts an equal number of books on 5 shelves. How many books are on each shelf? (7-1)



- (A) 20
(B) 6
(C) 5
(D) 4



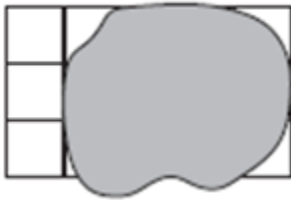
5. Andy wants to find $18 \div 6$. Which missing factor equation can he use to solve the problem? (7-3)
- (A) $18 \times n = 6$
 - (B) $6 \times n = 18$
 - (C) $18 - n = 6$
 - (D) $18 + n = 6$
6. Grace had 32 stickers to share equally with 8 friends. How many stickers did she give to each friend?
- (A) 2 stickers
 - (B) 4 stickers
 - (C) 6 stickers
 - (D) 8 stickers
7. Hank bought enough pancake mix to make 27 pancakes. He will make 3 pancakes at a time. How many times will Hank make 3 pancakes?
- (A) 24
 - (B) 9
 - (C) 8
 - (D) 3



8. Al needs 72 nails. He bought 6 boxes of nails. How many nails does each box contain?

- (A) $72 \div 6 = n$
- (B) $n = 72 \times 6$
- (C) $n \div 6 = 72$
- (D) $72 - 6 = n$

9. Some paint spilled on a tile floor covering up part of it. The tile floor was in the shape of a rectangle. There were 15 square tiles in the whole floor. How many tiles were in each row?



- (A) 3
- (B) 4
- (C) 5
- (D) 6

10. How many pairs can you make with 18 socks?

- (A) 2
- (B) 6
- (C) 9
- (D) 11



Topic 5-8 Benchmark Test

Mark the best answer.

1. What is 7×4 ?

- (A) 11
- (B) 14
- (C) 28
- (D) 35

2. Gina has 33 sheets with 40 stamps on each sheet. How many stamps does Gina have in all?

- (A) 70
- (B) 120
- (C) 340
- (D) 1,200

3. What is $2 \times 3 \times 8$?

- (A) 64
- (B) 48
- (C) 16
- (D) 13



4. Robert and David were asked to set up 5 rows of 6 tables in the school gym, but they forgot the product of 5×6 . Which two multiplication facts can they use to find the total number of tables they will need?

- Ⓐ 1×5 and 1×6
- Ⓑ 5×2 and 5×4
- Ⓒ 5×5 and 5×2
- Ⓓ 5×4 and 5×0

5. You found the product of 8×9 to be 72 on a multiplication table. What is the unknown value for n in the division sentence below?

$$72 \div n = 9$$

- Ⓐ 7
- Ⓑ 8
- Ⓒ 9
- Ⓓ 10

6. Five friends equally share 20 strawberries. How many strawberries does each friend get?

- Ⓐ 2 strawberries
- Ⓑ 4 strawberries
- Ⓒ 5 strawberries
- Ⓓ 10 strawberries



7. What is $2,311 \times 1$?

- (A) 1
- (B) 2,301
- (C) 2,310
- (D) 2,311

8. What is 8 multiplied by 0?

- (A) 0
- (B) 1
- (C) 8
- (D) 16

9. George wants to put 36 markers on 9 tables so that each table has the same number of markers. Which equation shows how to find the number of markers George should put on each table?

- (A) $36 \times ? = 9$
- (B) $? - 9 = 36$
- (C) $9 + ? = 36$
- (D) $36 \div ? = ?$



10. Look at the multiplication sentence below.

$$6 \times 7 = 42$$

Which other number sentence is in this fact family?

- Ⓐ $42 \div 6 = 7$
 - Ⓑ $42 - 7 = 35$
 - Ⓒ $6 + 7 = 13$
 - Ⓓ $6 \times 6 = 36$
11. Look at the number sentences below.

$$9 - 3 = 6$$

$$6 - 3 = 3$$

$$3 - 3 = 0$$

Which division sentence matches the repeated subtraction sentences?



12. Five children and 2 adults went to the movies. The table below shows the ticket prices.

Movie Tickets	
Adult	\$5
Child	\$3

What was the total cost for the tickets?

- (A) \$10
(B) \$15
(C) \$25
(D) \$30
13. Shana has 15 roses. She wants to put 3 roses in each vase. How many roses will Shana need?
- (A) 18 vases
(B) 15 vases
(C) 12 vases
(D) 5 vases
14. Keisha plans to make 4 puppets. She needs 2 buttons for each puppet. How many buttons will she need in total?
- (A) 8 buttons
(B) 6 buttons
(C) 4 buttons
(D) 2 buttons



15. What is 9×5 ?

- A 14
- B 45
- C 54
- D 60

16. If 2×10 is 20, and 4×10 is 40, what is 7×10 ?

- A 7
- B 17
- C 70
- D 700

17. If $3 \times 6 = 18$, what is $2 \times 3 \times 6$?

- A 6
- B 12
- C 18
- D 36

18. Solve the problem below.

$$(8 \times 4) \times 2 = (4 \times 2) \times \square$$

- A 2
- B 4
- C 6
- D 8



19. Mr. Sterling is setting up chairs and tables. He puts 6 chairs at each table. He records the number of chairs in the table below.

Number of Tables	Number of Chairs
1	6
2	12
3	18
4	
5	

How many chairs will he need for 5 tables?

- (A) 24
(B) 26
(C) 30
(D) 36
20. Kobe has 21 balloons. He puts them into 7 bunches. Which number sentences can help you find how many balloons are in each bunch?

- (A) $21+7=28$
(B) $21-7=14$
(C) $21\times 7=147$
(D) $21\div 7=3$



21. Look at the sentence below.

$$8 \times \square = 24$$

Which number makes the sentence true?

- (A) 2
- (B) 3
- (C) 4
- (D) 12

22. Ms. Welsh wrote the sentence below on the board.

$$12 \div 2 = 8 - \square$$

Which number can Sanjay write to make the sentence true?

- (A) 2
- (B) 4
- (C) 6
- (D) 8



23. Which value for n makes the equation true?

$$3 \times n = 30$$

- Ⓐ 10
 - Ⓑ 9
 - Ⓒ 8
 - Ⓓ 7
24. Karen erased part of the problem below.

$$25 \div \square = 5$$

Which number did she erase?

- Ⓐ 2
- Ⓑ 5
- Ⓒ 10
- Ⓓ 25



First Quarter Math Assessment

1. What is the value of the **6** in 687,325?

- (A) 600 (B) 6,000 (C) 60,000 (D) 600,000

2. What is the value of **1** in 864,152?

- (A) 1 (B) 10 (C) 100 (D) 1,000

3. Which symbol goes in the circle?

$$298 \bigcirc 269$$

- (A) + (B) = (C) > (D) <

4. Which symbol goes in the circle?

$$1,340 \bigcirc 4,003$$

- (A) + (B) = (C) > (D) <



5. Which group of numbers is listed from **least to greatest**?

- (A) 8,327 3,287 2,378
(B) 3,287 2,378 8,327
(C) 2,378 8,327 3,287
(D) 2,378 3,287 8,327

6. Dee, Audrey, and Jenny are standing in line. How many different ways can they line up?

- (A) 3 (B) 5 (C) 6 (D) 9

7. Classes A, B, C, and D are participating in a tug-of-war. How many different **groups of 2** can they make?

- (A) 8 (B) 6 (C) 4 (D) 2

8. Zach bought a notebook for \$0.42 and paid with \$1.00. How much change did he receive?

- (A) \$0.48 (B) \$0.95 (C) \$0.58 (D) \$0.53



9. Tom paid 39¢ for a pen. Which group of coins shows this amount?



10. Brianna paid the money shown for lunch. How much did she pay for lunch?



- (A) \$3.80 (B) \$3.84 (C) \$3.89 (D) \$4.09

11. What is the missing number? $4 + 8 = 8 + \square$

- (A) 2 (B) 4 (C) 8 (D) 12



12. What is the missing number? $(\square + 2) + 9 = 6 + (2 + 9)$

Ⓐ

2

Ⓑ

6

Ⓒ

8

Ⓓ

9

13. What is the missing number? $\square + 2 = 2$

Ⓐ

1

Ⓑ

0

Ⓒ

2

Ⓓ

4

14. Round 94 to the **nearest ten**.

Ⓐ

84

Ⓑ

90

Ⓒ

95

Ⓓ

100

15. Round 734 to the **nearest hundred**.

Ⓐ

700

Ⓑ

730

Ⓒ

800

Ⓓ

825

16. Round 377 to the **nearest hundred**.

Ⓐ

300

Ⓑ

370

Ⓒ

380

Ⓓ

400



17. A clothing store had 45 green sweaters and 37 white sweaters. Which is the best **estimate** of the total number of green and white sweaters in the store? **Estimate to the nearest ten.**

(A) 100 (B) 90 (C) 80 (D) 70

18. A class collected 321 leaves last week and 283 leaves this week. What is the best **estimate** for the number of leaves they have collected so far? **Estimate to the nearest hundred.**

(A) 500 (B) 600 (C) 700 (D) 800

19. Lily saw these animals at the beach. How many animals did Lily see exactly in all?



33 fish



54 gulls

DO NOT ESTIMATE YOUR ANSWER!

(A) 21 animals (B) 80 animals (C) 87 animals (D) 70 animals



20. The third grade collected canned goods. How many cans did they collect altogether?

CANNED GOODS DRIVE

Day	Cans Collected
Thursday	354
Friday	235

Ⓐ

429 cans

Ⓑ

489 cans

Ⓒ

579 cans

Ⓓ

589 cans

21. Faith has 3 markers. She finds 5 more. How many markers does Faith have in all?

Ⓐ

$3 + 3 = 6$

Ⓑ

$3 + 5 = 8$

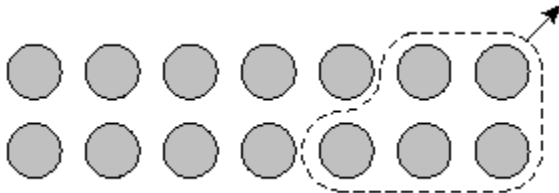
Ⓒ

$5 - 3 = 2$

Ⓓ

$5 + 1 = 6$

22. What number sentence is shown?



Ⓐ

$9 + 5 = 14$

Ⓑ

$9 - 5 = 4$

Ⓒ

$14 - 5 = 9$

Ⓓ

$19 - 5 = 14$

23. A bus left 68 passengers. At the first stop, 35 passengers got off the bus. How many passengers were left on the bus?

Ⓐ

23

Ⓑ

33

Ⓒ

43

Ⓓ

103



24. $267 - 189 = ?$

Ⓐ

122

Ⓑ

78

Ⓒ

456

Ⓓ

178

25. The total distance between Ben's house and his uncle's house is 318 miles. So far he has driven 192 miles. Which is the best estimate of how many more miles Ben has to drive? **Round to the nearest hundred!**

Ⓐ

100

Ⓑ

200

Ⓒ

130

Ⓓ

500

26. $503 - 346 = ?$

Ⓐ

243

Ⓑ

167

Ⓒ

157

Ⓓ

849

27. Which problem does **not** belong in the fact family of **3, 5, 8**?

Ⓐ

$3 - 8 = 5$

Ⓑ

$3 + 5 = 8$

Ⓒ

$5 + 3 = 8$

Ⓓ

$8 - 5 = 3$



First Quarter Math Assessment

1. What is the value of the 6 in 687,325?

- (A) 600
- (B) 6000
- (C) 60000
- (D) 600,000

2. What is the value of 4 in 864,152?

- (A) 40
- (B) 400
- (C) 4000
- (D) 400,000

3. Which symbol goes in the circle?

$$298 \bigcirc 269$$

- (A) +
- (B) =
- (C) >
- (D) <

4. Which symbol goes in the circle?

$$1,340 \bigcirc 4,003$$

- (A) +
- (B) =
- (C) >
- (D) <

5. Which group of numbers is listed from least to greatest?

- (A) 8,327 3,287 2,378
- (B) 3,287 2,378 8,327
- (C) 2,378 8,327 3,287
- (D) 2,378 3,287 8,327



6. Which group of numbers is listed from **greatest to least**?

- (A) 5,629 5,296 5,269
 (B) 5,269 5,629 5,296
 (C) 5,296 5,269 5,629
 (D) 5,269 5,296 5,629

7. Dee, Audrey, and Jenny are standing in line. How many different ways can they line up?

- (A) 3
 (B) 5
 (C) 6
 (D) 9

8. Ms. Smith's, Mr. Howard's, Ms. Walker's, and Mr. Rinder's classes are participating in a tug-of-war. How many different **groups of 2** can they make?

- (A) 8
 (B) 6
 (C) 4
 (D) 2

9. Zach bought a notebook for \$0.42 and paid with \$1.00. How much change did he receive?

- (A) \$0.48
 (B) \$0.95
 (C) \$0.58
 (D) \$0.53

10. Tom paid 39¢ for a pen. Which group of coins shows this amount?



11. Brianna paid the money shown for lunch. How much did she pay for lunch?



- (A) \$3.80
- (B) \$3.84
- (C) \$3.89
- (D) \$4.09

12. What is the missing number? $4 + 8 = 8 + \square$

- (A) 2
- (B) 3
- (C) 8
- (D) 12

13. What is the missing number? $(\square + 2) + 9 = 6 + (2 + 9)$

- (A) 2
- (B) 6
- (C) 8
- (D) 9

14. What is the missing number? $\square + 2 = 2$

- (A) 1
- (B) 0
- (C) 2
- (D) 4

15. Round 58 to the **nearest ten**.

- (A) 50
- (B) 55
- (C) 60
- (D) 70



16. Round 94 to the **nearest ten**.

- (A) 84
- (B) 90
- (C) 95
- (D) 100

17. Round 734 to the **nearest hundred**.

- (A) 700
- (B) 730
- (C) 800
- (D) 825

18. Round 377 to the **nearest hundred**.

- (A) 300
- (B) 370
- (C) 380
- (D) 400

19. A clothing store had 45 green sweaters and 37 white sweaters. Which is the best **estimate** of the total number of green and white sweaters in the store?

- (A) 100
- (B) 90
- (C) 80
- (D) 70

20. Diane is asking 341 students what afternoon snack they like best. She questioned 213 students. Which number sentence will best help her **ESTIMATE** how many students she has **NOT** questioned? **Estimate to the nearest hundred.**

- (A) $340 - 210 = 130$
- (B) $300 - 200 = 100$
- (C) $350 - 200 = 150$
- (D) $400 - 200 = 200$



21. A class collected 321 leaves last week and 283 leaves this week. What is the **best estimate** for the number of leaves they have collected so far?

- (A) 500
- (B) 600
- (C) 700
- (D) 800

22. Lily saw these animals at the beach. How many animals did Lily see in all?



33 fish



57 gulls

- (A) 100 animals
- (B) 90 animals
- (C) 80 animals
- (D) 70 animals

23. The third grade collected canned goods. How many cans did they collect altogether?

CANNED GOODS DRIVE

Day	Cans Collected
Thursday	354
Friday	235

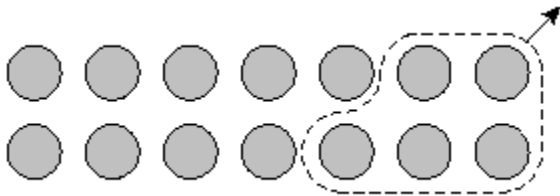
- (A) 429 cans
- (B) 489 cans
- (C) 579 cans
- (D) 589 cans

24. Faith has 3 markers. She finds 5 more. How many markers does Faith have in all?

- (A) $3 + 3 = 6$
- (B) $3 + 5 = 8$
- (C) $5 - 3 = 2$
- (D) $5 + 1 = 6$



25. What number sentence is shown?



- Ⓐ $9 + 5 = 14$
 Ⓑ $9 - 5 = 4$
 Ⓒ $14 - 5 = 9$
 Ⓓ $19 - 5 = 14$

26. A bus left the station with 68 passengers. At the first stop, 35 passengers got off the bus. How many passengers were left on the bus?

- Ⓐ 23
 Ⓑ 33
 Ⓒ 43
 Ⓓ 103

27. A candle store had 267 candles on Monday. By Friday, the store had sold 189 of the candles. How many of the candles had **NOT** been sold?

- Ⓐ 122
 Ⓑ 78
 Ⓒ 456
 Ⓓ 178

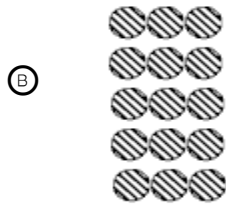
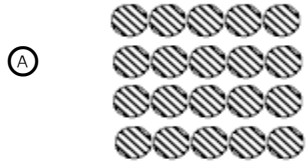
28. Which problem does **not** belong in the fact family of **3, 5, 8**?

- Ⓐ $3 - 8 = 5$
 Ⓑ $3 + 5 = 8$
 Ⓒ $5 + 3 = 8$
 Ⓓ $8 - 5 = 3$



Second Quarter Math Assessment

1. Which of the following shows 5×3 ?



2. Which of the following shows 4×6 ?



3. $3 \times 4 =$ _____

- A 6
- B 7
- C 12
- D 15

4. $8 \times 7 =$ _____

- A 15
- B 35
- C 56
- D 45

5. $11 \times 6 =$ _____

- A 17
- B 66
- C 55
- D 60

6. $2 \times 5 =$ _____

- A 10
- B 7
- C 15
- D 20

7. $3 \times 12 =$ _____

- A 24
- B 9
- C 15
- D 36

8. $9 \times 1 =$ _____

- A 9
- B 10
- C 0
- D 8

9. $10 \times 0 =$ _____

- A 10
- B 0
- C 20
- D 1

10. What is the product of 4 and 12?

- A 60
- B 24
- C 36
- D 48



11. Solve $2 \times 3 \times 4$

- (A) 24
- (B) 9
- (C) 20
- (D) 22

12. Solve $1 \times 5 \times 7$

- (A) 12
- (B) 13
- (C) 35
- (D) 40

13. Marie bought 4 packs of tomatoes. Each pack had 10 tomatoes. How many tomatoes did Marie buy? She used 16 of the tomatoes in a salad. How many tomatoes did she have left?

- (A) Marie bought 14 tomatoes and had 0 left.
- (B) Marie bought 40 tomatoes and had 24 left.
- (C) Marie bought 40 tomatoes and had 26 left.
- (D) Marie bought 41 tomatoes and had 25 left.

14. Mr. Gellar bought 6 packs of cookies. Each pack had 9 cookies. How many cookies did he buy? He gave 28 of the cookies to his students. How many of the cookies did he have left?

- (A) Mr. Gellar bought 42 cookies and had 14 left.
- (B) Mr. Gellar bought 48 cookies and had 20 left.
- (C) Mr. Gellar bought 54 cookies and had 26 left.
- (D) Mr. Gellar bought 54 cookies and had 36 left.

15. Which shows the time 7:15 in another way?

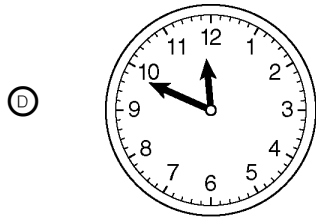
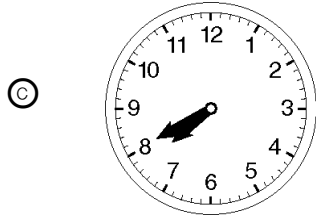
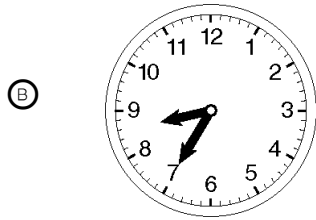
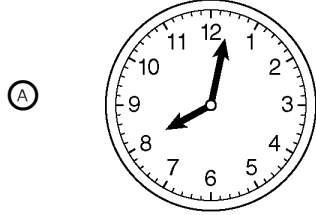
- (A) quarter after 7
- (B) half past 7
- (C) quarter to 7
- (D) 45 minutes to 7



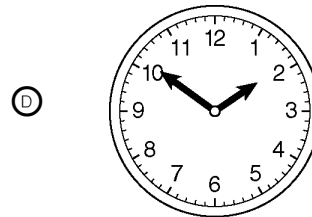
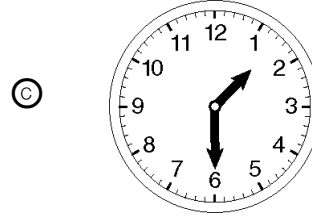
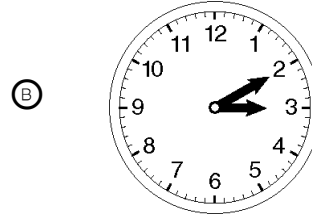
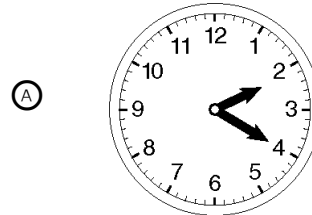
16. Which shows the time 9:30 in another way?
- Ⓐ quarter after 9
 - Ⓑ quarter before 9
 - Ⓒ 45 minutes to 9
 - Ⓓ half past 9
17. Jan began to read at 9:00. She read for 53 minutes. What time is it now?
- Ⓐ 8:53
 - Ⓑ 9:53
 - Ⓒ 10:00
 - Ⓓ 9:50
18. If a month ends on a Wednesday, on what day will the next month begin?
- Ⓐ Sunday
 - Ⓑ Wednesday
 - Ⓒ Thursday
 - Ⓓ Monday



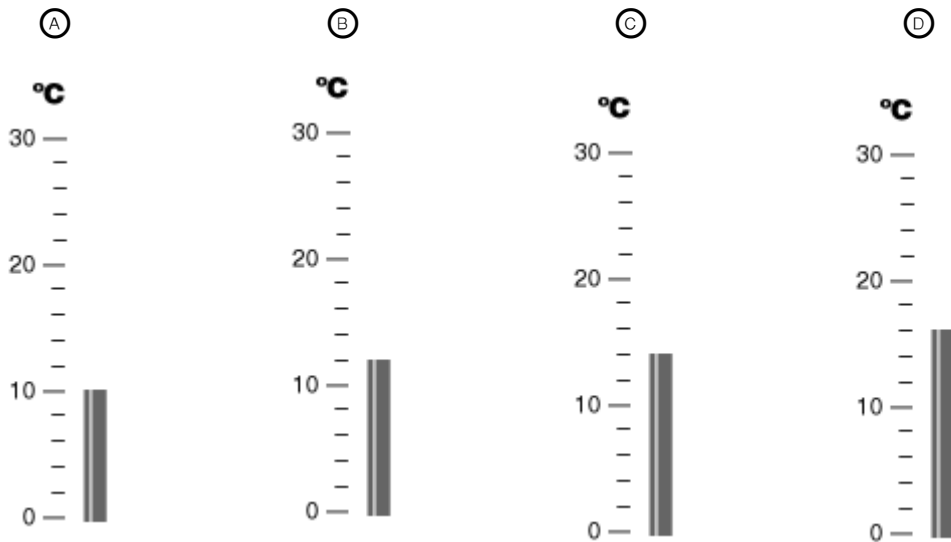
19. Which clock shows 8:02?



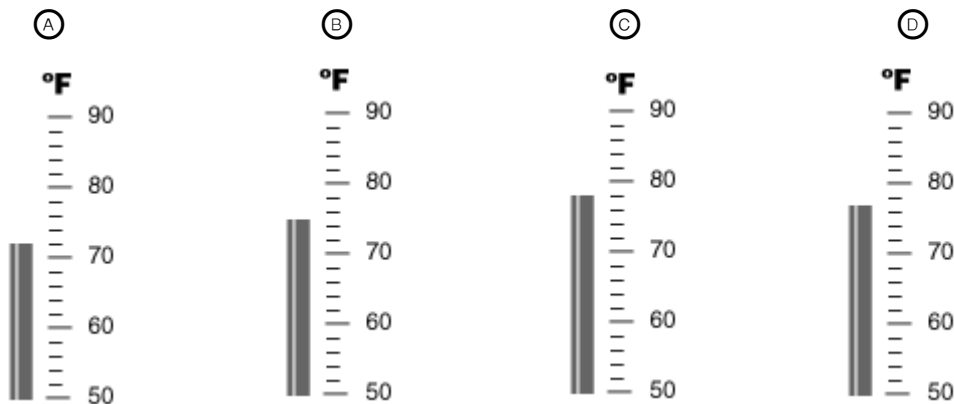
20. Which clock shows 2:20?



21. A thermometer read 14°C . Which thermometer shows this temperature?



22. The temperature at Paula's house is 72°F . Which thermometer shows this temperature?



23. Which of these statements describes a likely event?

- (A) The moon will turn to cheese.
- (B) The sun will set in the evening
- (C) Tomorrow will have 25 hours in the day.
- (D) School will close forever.



24. Which of these statements describes a unlikely event?

- Ⓐ The sun will rise.
- Ⓑ It will snow in the summer.
- Ⓒ A dog will read a book.
- Ⓓ A person will eat today.

25. Which of these statements describes a certain event?

- Ⓐ There will be 7 days in next week.
- Ⓑ The moon will rise with the sun tomorrow.
- Ⓒ The cat will have puppies.
- Ⓓ The boy will be taller than his father.

26. Which of these statements describes an impossible event?

- Ⓐ Ice cubes will melt if left out in the sun.
- Ⓑ A tree will speak to you.
- Ⓒ The earth will revolve around the sun.
- Ⓓ Boiling water will scald you.

27. Among the third graders, Chris, Amy, Kareem, Philip, Vanessa, Joey, and Ken were all swimmers. Which tally chart would show this number of swimmers?

- Ⓐ 
- Ⓑ 
- Ⓒ 
- Ⓓ 



28. Look at the marbles in the bowl.

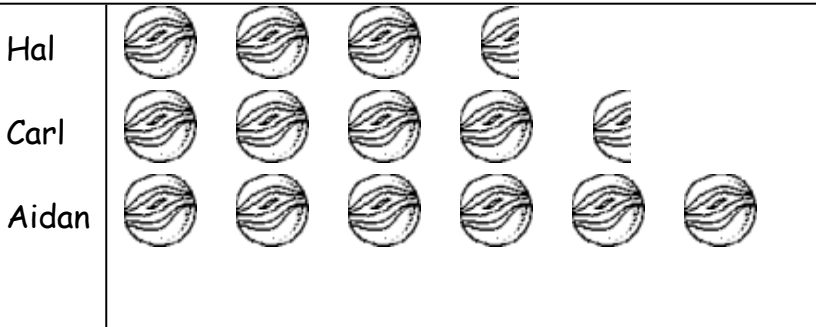


Which color marble is most likely to be chosen?

- (A) black
- (B) white

29. Use the pictograph below.

NUMBER OF MARBLES IN COLLECTION



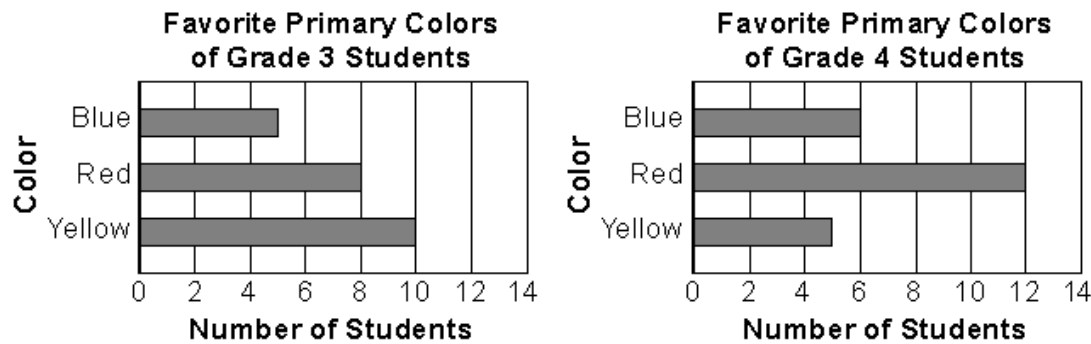
Each = 2 marbles. Each = 1 marble.

How many marbles does Hal have?

- (A) 9
- (B) 3
- (C) 7
- (D) 4



30. Which statement is true about the data in the graphs?



- (A) More students favor blue in grade 3 than in grade 4.
- (B) Red is the favorite color in both grades.
- (C) More students favor yellow in grade 3 than in grade 4.
- (D) The number of students who favor red in grade 4 is twice the number of students who favor red in grade 3.

31. There are 7 blue balls, 12 green balls, 6 red balls, and 8 yellow balls in a bag. If you reach into the bag without looking and pick a ball, which are you least likely to choose?

- (A) blue
- (B) green
- (C) red
- (D) yellow

